

Figure 30.1 Kaplan-Meier Curves on the left-hand side, and Cumulative Hazard Curves on the right-hand side. Solid line for men with ten or more years of education, dashed line for those with less than ten years

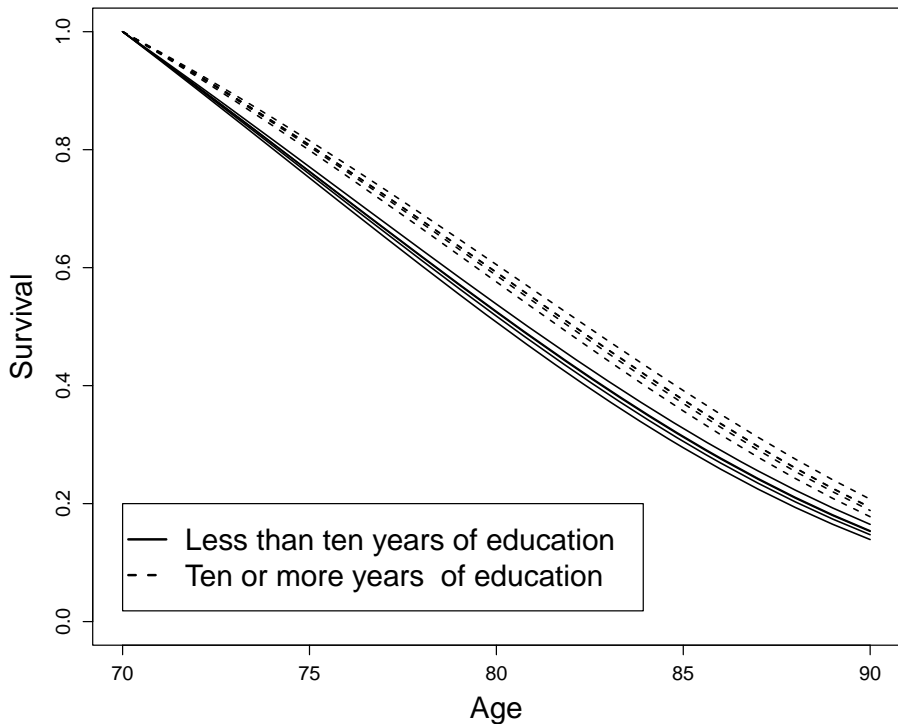


Figure 30.3 For Men Aged 70 and Born in 1920, Posterior Means of Survival Derived from the Gompertz Frailty Model. For both education groups, five survival curves corresponding to the five clusters in the data

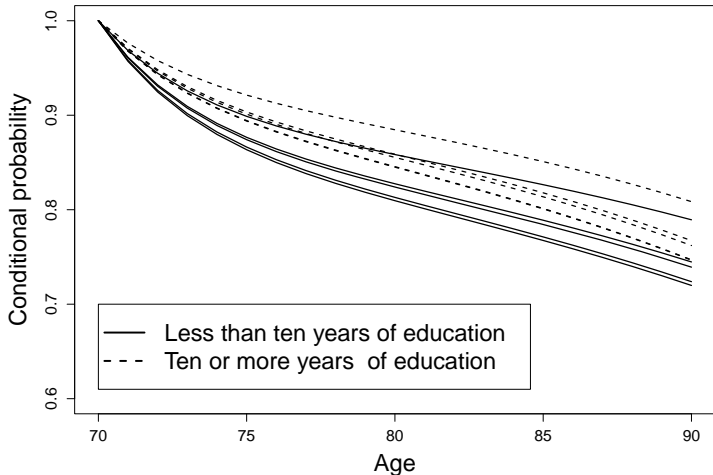


Figure 30.5 For Men Born in 1920, Posterior Means of the Probability of Not Being Disabled Conditional on Being Alive, and no Disability at Age 70. For both education groups, five survival curves corresponding to the five clusters in the data. The top two curves at age 90 correspond to the cluster with the lowest frailty